

London 2012



Paralympic Games Healthcare Guide



About the Healthcare Guide

All information contained in this Healthcare Guide was correct at the time of publication in January 2012. However, please note that these details may change between now and the Games. All updates to this guide will be posted on The Exchange, LOCOG's secure extranet (<https://theexchange.london2012.com>), where they may be downloaded by NPCs.

Along with the Pharmacy Guide, this edition of the Healthcare Guide is initially being published in electronic form only. Printed versions of both guides will be distributed to NPC medical teams upon arrival at the Paralympic Village at Games time.



Introduction

The London Organising Committee of the Olympic Games and Paralympic Games Ltd (LOCOG) has developed a comprehensive healthcare programme for the London 2012 Paralympic Games. This programme has been designed to meet the healthcare needs of athletes, team officials, IPSF Games officials, the Paralympic Family, members of the media, workforce and spectators. During the Games period, medical services will be delivered by teams of professional volunteers at facilities equipped and designed to deliver immediate and necessary care to all client groups.



Only those persons identified on each National Paralympic Committee's (NPC) Medical Practitioner Form, who have registered with the UK General Medical Council (GMC), will be authorised to provide medical care to members of their own delegation or to athletes from other delegations (subject to written agreement between NPCs) between 22 August 2012 and 12 September 2012.

In welcoming you to the London 2012 Paralympic Games, we look forward to continuing the tradition of high-quality medical care provided by previous organising committees.

Yours sincerely,

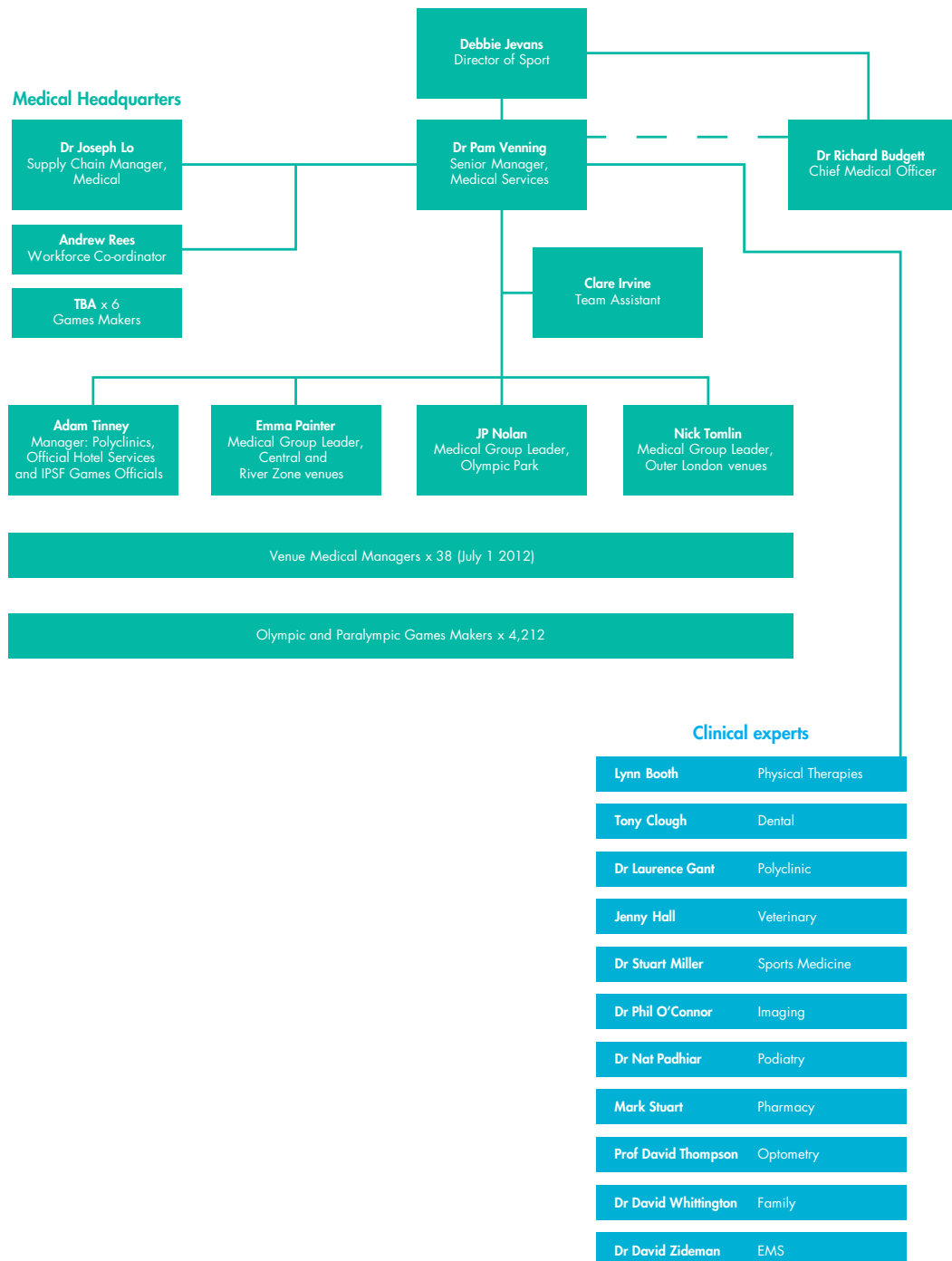
Richard Budgett
Chief Medical Officer,
London 2012

Pamela Venning
Senior Medical Manager,
London 2012

London 2012 Paralympic Games Healthcare Guide: Contents

1. London 2012 Medical Services team	5
2. Ethical guidelines for healthcare in sports medicine	6
3. London 2012 medical services operations	6
3.1 LOCOG Medical Headquarters	6
4. Medical encounter system	6
5. Accreditation	6
5.1 NPC healthcare professionals	6
6. Team doctors	7
6.1 Registration of NPC team doctors	7
6.2 Access and privileges	7
6.3 Return to play (RTP) decisions	7
6.4 Malpractice/liability	7
6.5 Import and export of medicines	8
6.6 Distribution of medical materials to NPC medical teams	8
6.7 Epidemiology study of sports injuries	9
6.8 Dental care	9
6.9 Pre-Opening Ceremony NPC clinical team meeting	9
6.10 Games-time NPC team doctor workshop	9
6.11 Autonomic dysrelexia and boosting	9
7. Paralympic Family medical services	9
8. Medical services in the Villages	10
8.1 NPC medical services	10
8.2 Polyclinic services	11
8.3 Specialist on-call consultants/scheduled clinics	11
8.4 Paralympic Village Plaza	11
9. Medical services at competition venues	12
9.1 Healthcare for athletes, team officials and IPSF Games officials	12
9.2 Healthcare for Paralympic Family members	12
9.3 Healthcare for spectators, members of the media, sponsors and workforce	12
10. Medical services at Games-time training venues	12
11. Medical services at other non-competition venues	13
11.1 Opening and Closing Ceremonies	13
11.2 London Heathrow Airport	13
11.3 International Broadcast Centre/Main Press Centre (IBC/MPC)	13
11.4 Paralympic Family hotels	13
12. Designated Paralympic hospitals	13
13. Repatriation	13
14. Public health	14
14.1 No-smoking policy	15
15. Research	15

1. London 2012 Medical Services team



2. Ethical guidelines for healthcare in sports medicine

The International Paralympic Committee Medical Committee (IPC MC) and the LOCOG Medical Services team are committed to the IPC Medical Code in order to ensure that all athletes receive optimal care from all clinicians at the London 2012 Paralympic Games. The IPC Medical Code is available online at www.paralympic.org/export/sites/default/IPC/IPC_Handbook/Section_2/IPC_Medical_Code_Final.pdf

3. London 2012 medical services operations

3.1 LOCOG Medical Headquarters

Medical services will be coordinated through Medical Headquarters (MHQ), located within the polyclinic at the Paralympic Village in London. The centre will be operational 24 hours a day from 07:00 on 22 August 2012 until 18:00 on 12 September 2012. The MHQ will:

- Maintain a constant network of communication with all venues across the UK (competition venues, non-competition venues and polyclinics).
- Coordinate staffing, logistics administration and resource management for the medical and healthcare programme, including public health matters.
- Monitor medical activity across all medical services, and resolve both escalated issues and NPC-related issues.
- Report directly to the Main Operations Centre (MOC), the Chairperson of the IPC Medical Committee and LOCOG's Chief Medical Officer, and communicate as needed to NPC Chief Medical Officers, either directly or through NPC Services and Relations.
- Assist in the coordination of emergency responses.
- Maintain communications and networks with UK external agencies, including the Health Protection Agency (HPA), the Department of Health, the designated Paralympic hospitals and the ambulance service.

4. Medical encounter system

All venues will use a secure, electronic medical encounter system. Data will be entered by LOCOG Medical Services workforce at terminals located at athlete and spectator medical stations, polyclinics, the main Paralympic Family hotel and the International Broadcast Centre/Main Press Centre (IBC/MPC). Data and statistics will be collated at the MHQ and will be used to compile daily reports for the IPC Medical Committee.

The electronic medical encounter system is an integral part of Games management. Patients who consult with the LOCOG clinical team at Games facilities, as well as applicable NPC healthcare personnel, are requested to help LOCOG clinical teams to complete these records (electronic or paper) in order to ensure continuity of care.

5. Accreditation

5.1 NPC healthcare professionals

NPC healthcare professionals will be accredited in the Am category, in accordance with the IPC Accreditation and Sport Entries at the Paralympic Games Users' Guide. NPC healthcare professionals may have access to the field of play and to athlete preparation areas, and will also have access to back-of-house administration organisation areas if they contain treatment facilities.

6. Team doctors

6.1 Registration of NPC team doctors

It is a criminal offence to purport to be a registered or licensed medical practitioner in the UK unless registered by the GMC. This is for the protection of patients.

A special registration process for NPC team doctors is in place for the London 2012 Paralympic Games. Team doctors must be registered with the GMC to practise from 22 August 2012 until 12 September 2012, the opening and closing dates of the Paralympic Village. This temporary, special-purpose registration will license doctors to treat only members of their own team (or other non-UK teams by special arrangement), and will permit doctors to prescribe and order imaging and pathology tests at Paralympic polyclinics. **All NPC team doctors must be registered by 29 February 2012.**

6.2 Access and privileges

During the Games, NPC team doctors will be able to:

- Request physiotherapy and other treatments at venues and at Paralympic Village polyclinics.
- Request diagnostic imaging (MRI, CT, ultrasound and X-ray) and laboratory tests at Paralympic Village polyclinics.
- Write prescriptions for members of its own delegation, to be dispensed at Village polyclinic pharmacies (free of charge) or at any commercial pharmacy (where a fee will be payable). For details of the medicines available from the polyclinic pharmacies, please refer to the London 2012 Paralympic Games Pharmacy Guide, available on The Exchange (<https://theexchange.london2012.com>).

Registered and accredited team doctors will be able to accompany athletes and members of their delegation to hospital and, with the consent of the patient, discuss the examination and treatment with the admitting physician. Final decisions and responsibility will rest with the admitting physician or surgeon.

Team doctors who fail to register will not be entitled to any of the above privileges.

6.3 Return to play (RTP) decisions

Clinical staff are available to advise on an athlete's fitness to return to play (RTP). However, the final decision will rest with the NPC physician and, where applicable, the Medical Officer of the relevant International Paralympic Sport Federation (IPSF), and the IPC Medical Committee may be consulted if required. LOCOG Medical Services personnel will not normally be able to make the final RTP decision.

In the event of a life-threatening condition, the final decision on how to proceed will rest with the LOCOG physician, where possible in careful consultation with the relevant team physician and the IPC Medical Committee.

6.4 Malpractice/liability

LOCOG assumes no responsibility for any healthcare provided to NPC team members and delegates by NPC healthcare personnel. LOCOG will not provide malpractice or liability insurance for NPC healthcare personnel: it is the responsibility of each NPC to ensure malpractice/liability insurance is in place. However, it is recommended that team doctors inform their medical defence organisation that they are travelling abroad with a sports team and check they are covered for this role. Except for Good Samaritan acts, team doctors should not treat any UK citizens unless they are fully registered with the GMC.

6.5 Import and export of medicines

The Medicines and Healthcare products Regulatory Agency (MHRA) is responsible for ensuring compliance with medicines legislation in the UK.

See below for an overview of guidance for importing pharmacy (P) and prescription-only medicines (POM) for personal use into the UK.

- In most situations, UK medicines legislation does not impose restrictions on the import of medicines for personal use. However, for the purposes of team preparations leading up to and during the Paralympic Games, the MHRA is implementing a reasonable restriction on bringing medicines for personal use into the UK. The quantity of POM and P non-controlled medicines that may be brought in or taken out of the UK will be restricted to a quantity that is equal to or less than three months' supply.
- The head doctor accompanying a team will need to provide a list of the medicines the team are bringing into the UK, including dosages and amounts. Details of the information that must be included on this list are included on pages 8 and 9 of the London 2012 Paralympic Games Pharmacy Guide. The list will constitute a statement on behalf of the NPC and will be kept by LOCOG Medical Services, and will be shared with the MHRA if requested.
- For medicines not licensed in the UK, it is advisable, in case any complications arise, that an acceptable, UK-licensed alternative should be prescribed if available.
- The importation (as well as the sale and supply) of unlicensed medicines containing certain specified herbal ingredients (for example, kava-kava) is not permitted. Further information is available on the MHRA website.
- The arrangements for importing controlled drugs for personal use will vary depending on the length of stay in the UK. It is advisable not to import controlled drugs.
- No export licences or documentation will be required unless the medicines are controlled drugs and the quantity constitutes more than three months' supply.

For a fuller explanation of the rules governing the import and export of medicines and medical devices for human use, please refer to the London 2012 Customs and Freight Forwarding Guide, available on The Exchange (<https://theexchange.london2012.com>).

For the definitive list of medicines available from the polyclinic pharmacies, along with comprehensive prescribing information for each drug, please refer to the London 2012 Paralympic Games Pharmacy Guide, available on The Exchange (<https://theexchange.london2012.com>).

Up-to-date information on the legal status of medicines within the UK is available on the MHRA website (www.mhra.gov.uk).

Up-to-date information on the prohibited status of UK medicines on the World Anti-Doping Agency (WADA) list is available at the Global Drug Reference Online (DRO) website (www.globaldro.com/uk-en).

6.6 Distribution of medical materials to NPC medical teams

Hard copies of the London 2012 Paralympic Games Healthcare Guide and the London 2012 Paralympic Games Pharmacy Guide will be distributed to NPC medical teams at Games time. In addition, the following materials will be distributed to team doctors upon arrival in the Paralympic Village (if the doctor is registered with the GMC):

- imaging requisition forms
- laboratory requisition forms
- prescription pads
- specialist consultation forms
- therapy requisition forms

6.7 Epidemiology study of sports injuries

The IPC Medical Committee will be conducting an epidemiology study on sport injuries and illnesses in Paralympic athletes who are competing in the London 2012 Paralympic Games. This project has been approved by the IPC Sports Science Committee in accordance with the IPC Research Policy.

LOCOG will assist in the development of sports injury and illness research at Games time. All delegations are invited to take part in the programme and complete the relevant forms issued by the IPC Medical Committee. Detail on the project will be communicated by the IPC Medical Committee in the lead-up to the Games.

6.8 Dental care

The LOCOG Dental Service will provide immediate and necessary dental care for all members of the Paralympic Family during the Games. Speciality services will be provided on site. However, depending on the seriousness of the case, patients may be referred to Barts and the London Hospital NHS Trust (referrals will be free of charge).

Athletes will be encouraged to attend dental screenings to help determine their oral health status, and a large variety of appropriate dental hygiene materials will be available. All athletes will receive educational materials detailing the relationship between good oral health and sport performance upon their registration in the Paralympic Village. In addition, there will be a custom-fit mouth guard (gum-shield) programme in operation during the Games.

6.9 Pre-Opening Ceremony NPC clinical team meeting

There will be a meeting for team clinical staff in the Paralympic Village in Stratford on 26 August 2012. Details will be communicated to NPCs in due course.

6.10 Games-time NPC team doctor workshop

The IPC Medical and Scientific Department, working with the LOCOG Medical Services team, will stage a NPC team doctor workshop during the Games period. Details on the time, date and location of the workshop, along with details of the programme, will be communicated to teams in due course.

6.11 Autonomic dysreflexia and boosting

The IPC position statement on autonomic dysreflexia and boosting will apply to all participants at the London 2012 Paralympic Games. The statement may be found in section 2, chapter 4.3 of the the IPC Handbook, which may be downloaded from the IPC website (www.paralympic.org/IPC/IPC_Handbook).

The IPC Medical Committee may appoint medical staff to conduct assessments of autonomic dysreflexia and boosting. These may be undertaken at any time deemed appropriate, including in call rooms or other such areas used by participants for warming up before competition, as reflected by the provisions of the IPC position statement.

7. Paralympic Family medical services

A medical services programme covering ambulance transportation, clinic and hospital services will be provided at no charge to Paralympic Family members during the Games. Paralympic Family members covered under the programme will include accredited NPC Presidents and Secretary Generals, athletes, team officials, IPSF representatives and Games officials. Coverage will in place from 22 August to 12 September, and will include treatment for acute illnesses and injuries, or acute exacerbations of pre-existing illnesses or injuries. The treatment of stable, pre-existing conditions is not covered.

LOCOG is not responsible for the medical insurance of delegation members outside the period defined above, or for the medical insurance of non-accredited delegation members. NPCs should obtain their own medical insurance for cases not covered by LOCOG's Paralympic Family medical services programme, and should consult an insurance professional for advice on medical insurance prior to travelling to the UK.

8. Medical services in the Villages

8.1 NPC medical services

8.1.1 LOCOG-provided furnishings

LOCOG will provide a certain number and variety of furnishings for NPCs' medical spaces. The quantities will be distributed across each NPC's allocated medical rooms according to the size of the delegation, in accordance with the numbers given below. Other useful guest items (for example, blankets and pillows) may be requested from the resident centres in the Paralympic Villages.

Furnishing	Number of items based on delegation size						
	1–24	25–50	51–100	101–200	201–300	301–450	451+
Blankets	1	2	4	5	6	7	8
Disposable covers and towels	1	2	4	5	6	7	8
Folding chairs	2	4	8	10	12	12	16
Folding tables (rectangular, small)	1	1	2	3	3	4	4
Ice coolers	1	1	2	3	4	4	5
Medical examination lamps	1	1	2	3	3	4	4
Medical examination tables	1	2	4	5	6	6	8
Packets of disposable paper cups	1	2	4	5	6	7	8
Partitions (single, portable screen)	0	2	4	5	5	5	5
Pillows	1	2	4	5	6	7	8
Refrigerators (half size)	1	1	1	1	1	1	1
Sharps bins	1	2	4	5	6	7	8
Stools	1	1	2	3	3	4	4
Trolleys	1	2	4	5	6	7	8
Utility cabinets (full height)	1	2	2	2	4	4	6
Waste bins	1	2	4	5	6	7	8

The following medical/therapy items will be available for purchase through Rate Card:

- chilling unit
- dressing trolley
- examination light and bulbs
- hydrocollator
- interferential current unit
- knee cuff pressure bulb
- neuromuscular electro-stimulation
- portable screen
- portable treatment plinths
- tens machine
- ultrasound machine
- various sized body cuffs

In addition:

- Ice and towels will be readily available from resident centres in the Villages.
- Biomedical waste disposal will be provided in medical spaces.
- High-altitude tents are not permitted in the Villages.

8.2 Polyclinic services

The polyclinics at the three Villages will be open from 22 August 2012. The Paralympic Rowing Village polyclinic will close at 18:00 on 4 September 2012; the Paralympic Sailing Village polyclinic will close at 18:00 on 8 September 2012; and the Paralympic Village polyclinic will close at 18:00 on 12 September 2012. Emergency services at the polyclinics will be available 24 hours a day, with all other services available from 07:00 until 23:00. The services will also be available to IPSF Games officials who will be residing in the Villages. During the Games transition period and the Village soft-opening period, emergency services will be provided through the polyclinic at the Paralympic Village in Stratford only.

The polyclinics will have the following services available, or will have access to services as follows:

Medical services	Paralympic Village	Paralympic Rowing Village	Paralympic Sailing Village
Dental	yes	yes	yes
Emergency services	yes	yes	yes
Hydrotherapy	yes	n/a*	n/a*
IPC Medical and Scientific Department offices	yes	n/a	n/a
Imaging (MRI, CT, X-ray, US)	yes	ultrasound only	ultrasound only
Laboratory services	yes	n/a*	n/a*
Optometry	yes	n/a*	n/a*
Overnight stay ward	yes	n/a*	n/a*
Pharmacy	yes	yes	yes
Physiotherapy	yes	yes	yes
Podiatry	yes	n/a*	n/a*
Primary care (family practice)	yes	yes	yes
Specialist clinics, eg dermatology	yes	n/a*	n/a*
Sports medicine	yes	yes	yes

* Where a service is not available in these locations, it will be provided through private healthcare services free of charge.

8.3 Specialist on-call consultants/scheduled clinics

The following specialist on-call consultants and scheduled clinics will be available during the Games. Interpretation services will be available.

- cardiology
- dermatology
- ENT
- gastroenterology
- internal medicine
- maxillofacial surgery
- neurology
- obstetrics and gynaecology
- ophthalmology
- orthopaedic surgery
- psychiatry
- surgery

8.4 Paralympic Village Plaza

First aid services will be provided in the Village Plaza.

9. Medical services at competition venues

9.1 Healthcare for athletes, team officials and IPSF Games officials

Medical services at all competition venues will be provided at athlete medical stations, which are generally close to the field of play. These services will be backed up by services at the polyclinics and the designated Paralympic hospitals.

Medical services in each competition venue will be managed by the Venue Medical Manager. LOCOG's Medical Services teams at each venue will work in line with the IPSF rules for the sport, and will consult with the IPC Medical Committee as required.

Medical services will generally be available from three hours before the start of competition until one hour after competition ends. However, times vary in some venues: please check with the Sport Information Desk (SID) or the Venue Medical Manager at the venue for details.

The following services will be provided:

- athlete-dedicated ambulance services
- field of play recovery teams
- sports medicine

In addition, if the venue has a warm-up area, a physiotherapy and/or a sports massage therapy service will be available.

For athletes who choose to stay outside the Villages, there will be no medical services in their accommodation.

9.2 Healthcare for Paralympic Family members

Members of the Paralympic Family will be treated by the closest accessible spectator medical team to them in the venue. Emergency services will be available for Paralympic Family members at competition venues; and if a hospital transfer is required, Paralympic Family members will be taken to the designated Paralympic Family hospital.

9.3 Healthcare for spectators, members of the media, sponsors and workforce

Spectators, members of the media, sponsors and workforce will have access to spectator medical stations at all Paralympic competition venues. The medical services provided at these medical stations will offer immediate and necessary care. In the event of an emergency, patients will be transported to the nearest hospital. Press and broadcast personnel will be transferred to the designated press/broadcast hospital.

10. Medical services at Games-time training venues

Medical services will be provided for athletes at all Games-time training venues during training sessions. Depending on IPSF rules, the following specialists will be available:

- ambulances (specific sports)
- emergency care physicians (specific sports)
- physiotherapists
- sports massage therapists

11. Medical services at other non-competition venues

11.1 Opening and Closing Ceremonies

Medical services will be provided to all groups at the Opening and Closing Ceremonies, and will be tailored to the different groups and their needs. Ambulances will support this response.

11.2 London Heathrow Airport

The statutory ambulance service will provide a comprehensive medical service at London Heathrow Airport, the official Port of Entry for the London 2012 Paralympic Games. The service will be enhanced for the Games with direct reporting lines to LOCOG's Senior Manager for Medical Services.

11.3 International Broadcast Centre/Main Press Centre (IBC/MPC)

A 24-hour family-practice service will be available at the IBC/MPC, and a roaming first-response team will be available to attend to incidents in both centres. A pharmacy will be available in the retail area, where press and broadcast personnel may purchase over-the-counter products and have prescriptions dispensed.

11.4 Paralympic Family hotels

A 24-hour family-practice service will be available in the main Paralympic Family hotel, the Grange St Paul's. In the event of an emergency, members of the Paralympic Family would be transferred to University College Hospital or the appropriate hospital in a specified care pathway.

12. Designated Paralympic hospitals

Hospital care is free during the period of the Paralympic Games (22 August to 12 September 2012). With the exception of appointed delegates who will reside in the Paralympic Village during the pre-opening period, Paralympic Family delegates should ensure they have healthcare insurance outside these dates.

The designated Paralympic hospitals are as follows:

London

- Athletes: Homerton University Hospital NHS Foundation Trust
Barts and the London NHS Trust (major trauma)
- Paralympic Family: University College Hospital
- Press and broadcast: Barts and the London NHS Trust

Eton Dorney/Paralympic Rowing Village in Egham

- Heatherwood and Wexham Park Hospitals NHS Foundation Trust

Weymouth and Portland/Paralympic Sailing Village in Portland

- Dorset County Hospital NHS Foundation Trust

13. Repatriation

LOCOG will provide a repatriation service during Games time for athletes, team officials, Paralympic Family members, IPSF delegates and Games officials. The service will include the cost of bringing a relative to the UK and accompanying medical personnel. In the event of a death, the repatriation process will cover the cost of transporting the body. All arrangements will be managed by LOCOG.

14. Public health

The UK has a well-established public health surveillance and response system, which is managed by the Health Protection Agency (HPA). For the period of the Paralympic Games, a team from the HPA will work from an office in the polyclinic at the Paralympic Village and provide LOCOG with daily reports on communicable disease issues, air-quality readings and other health-related issues for all venues.

The following conditions are legally reportable in the UK:

- acute encephalitis
- acute infectious hepatitis
- acute meningitis
- acute poliomyelitis
- anthrax
- botulism
- brucellosis
- cholera
- diphtheria
- enteric fever (typhoid or paratyphoid fever)
- food poisoning
- haemolytic uraemic syndrome (HUS)
- infectious bloody diarrhoea
- invasive group A streptococcal disease and scarlet fever
- Legionnaires' disease
- leprosy
- malaria
- measles
- meningococcal septicaemia
- mumps
- plague
- rabies
- rubella
- SARS
- smallpox
- tetanus
- tuberculosis
- typhus
- viral haemorrhagic fever (VHF)
- whooping cough
- yellow fever

Team doctors will be asked to participate in the following syndromic surveillance and report to the Polyclinic Manager:

- diarrhoea and vomiting
- fever
- jaundice
- meningitis/encephalitis
- rash
- respiratory symptoms

Food and water quality monitoring will be managed by LOCOG's Catering, Cleaning and Waste team.

14.1 No-smoking policy

Smoking will not be permitted in the following areas:

- in or around standalone facilities or amenities
- the field of play at all venues
- seating bowls at all venues (including training venues)
- enclosed bars or restaurants at all venues
- anywhere in any of the Villages, including bedrooms and living quarters, except in designated smoking areas (see below)
- enclosed staff break areas
- Paralympic transport vehicles
- sponsor hospitality areas

In all Paralympic Villages, smokers will be directed to discrete, designated and clearly signposted smoking areas away from the main public/workforce domains, which will have stub bins for cigarettes and will be regularly cleaned.

15. Research

The IPC Medical and Scientific Department will be coordinating a number of research studies during the London 2012 Paralympic Games. Further details on these studies will be made available in due course, and will be discussed at the pre-Opening Ceremony NPC clinical team meeting ([see page 9](#)).

London 2012

One Churchill Place

Canary Wharf

London E14 5LN

Switchboard +44 (0)845 267 2012

Fax +44 (0)20 3 2012 001

london2012.com

This publication is available on request in other formats.
To obtain these please quote reference number LOC2011/SPP/1242
Email info@enquiries.london2012.com
Phone +44 (0)845 267 2012

This document is correct as of January 2012.

This document and the official Emblems of the London 2012 Games are
© London Organising Committee of the Olympic Games and Paralympic
Games Limited 2007–2012. All rights reserved.